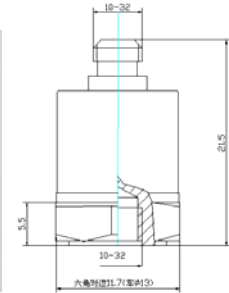


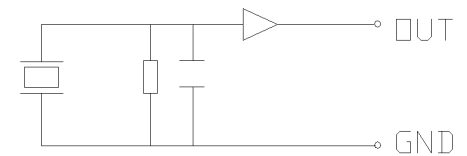
FEATURES

- Internal IEPE circuit
- Low output impedance
- Connection with standard cable
- Simple measurement system

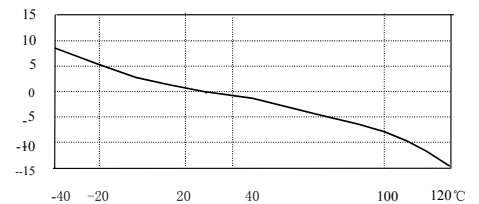


Specifications

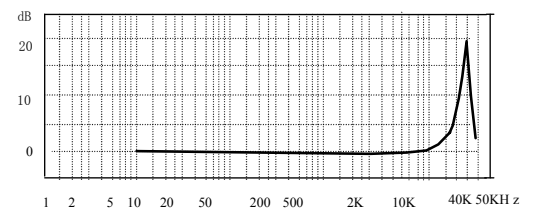
Sensitivity(20±5 °C)	10mV/ms ⁻²
Max. Operational Range(±peak)	500 ms ⁻²
Transverse Sensitivity	≤5 %
Frequency Range(±0.5dB)	1 to 10,000 Hz
Mounting Resonance Frequency	40,000 Hz
Operational Temp. Range	-40 to +120 °C
Shock Limit(±peak)	3,000g
Operational Voltage	+18 to +28 V(DC)
Operational Constant Current	+2 to +10 mA(typical 2 mA)
Max. Output Amplitude (±peak)	≤8V
Noise(1 to 20kHz)	≤0.5 mg
Base Strain Sensitivity	0.2mg/με
Magnetic Sensitivity	1.5g/T
Thermal Transient Sensitivity	10mg/°C
Output Impedance	≤100 Ω
DC Bias	12±2 V
Weigh	10 gram
Case Material	Stainless steel
Mounting Method	M5 screw
Sensing Element	PZT-5
Output Connection	L5(10-32 customized)
SUPPLIED WITH Calibration chart <ul style="list-style-type: none"> • M5 screw • Protection cap • STYV-1 cable fitted with L5 connectors(2M) 	



Circuit diagram



Temperature Response



Frequency Response