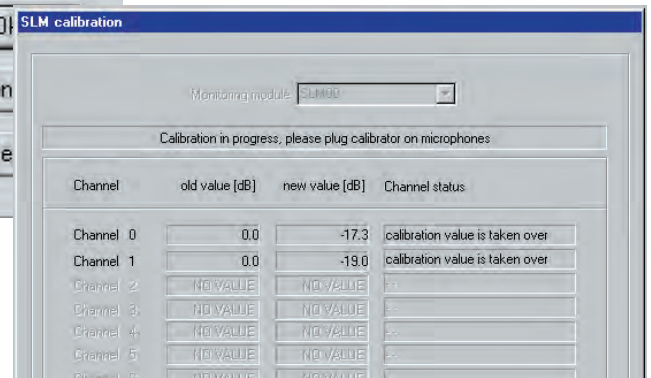


SLM

Sound Level Measurement Module



RogaDAQ16 in combination with MI-17 as a recommended hardware.

Sound Level Measurement Modul

The sound level measurement module has the following features:

- Time weighting: fast, slow, impulse, leq following DIN IEC 651 and DIN IEC 804.
- Easy microphone calibration with a pistonphone; in calibration mode, DasyLAB 6 detects the channel/microphone to calibrate and calculates the correct values.
- The correction values are stored with the worksheet.
- The module has 16 inputs and 16 outputs for the weighted and dB scaled sound levels.
- We recommend a 16 bit AD-converter with microphone power supply.